

*LeS*idee  
intimo made in italy

fall winter 2019



*LeSìdee*  
intimo made in italy



- .4 PIGIAMERIA VISCOSA
- .9 PIGIAMERIA LAST SEASON
- 18. MICRO-LANA PLISSET
- 30. MICRO-LANA PLISSET LUREX
- 32. WARM VISCOSA
- 36. LANA-SETA PLISSET
- 41. VISCOSA E PIZZO
- 42. MODAL E PIZZO
- 44. MODAL E TULLE



COD: MILLY



COD: MERILYN

---

**PIGIAMERIA VISCOSA**

95% viscosa, 5% elasthan



COD: EMMA



COD: MARLON

---

**PIGIAMERIA VISCOSA**

95% viscosa, 5% elasthan



COD: MAYA

PIGIAMERIA VISCOSA

95% viscosa, 5% elasthan



COD: MOIRA



COD: MUSA

---

**PIGIAMERIA VISCOSA**

95% viscosa, 5% elasthan



COD: DEVA



COD: MILO

PIGIAMERIA VISCOSA

95% viscosa, 5% elasthan





COD: VILMA



COD: VERA

---

PIGIAMERIA LAST SEASON

95% viscosa, 5% elasthan



COD: RENÉE



COD: RAMONA



COD: TERESA



COD: TANIA

---

PIGIAMERIA LAST SEASON

95% viscosa, 5% elasthan



COD: MALAGA ML



COD: PRAGA ML



COD: GEMMA ML



COD: MANOLA ML

---

PIGIAMERIA LAST SEASON

95% viscosa, 5% elasthan



COD: ANGELA ML



COD: CAROLINA



COD: TERRY ML



COD: FIORELLA

---

PIGIAMERIA LAST SEASON

95% viscosa, 5% elasthan



COD: CINZIA



COD: MARTA





COD: DANIELA



COD: DALIDA'

---

PIGIAMERIA LAST SEASON

95% viscosa, 5% elasthan



COD: MENTA

**MICRO LANA PLISSET**

70% microfibra pc, 30% lana



COD: TIMO



COD: NARCISO

---

MICRO LANA PLISSET  
70% microfibra pc, 30% lana



COD: PRIMULA



COD: MALVA



COD: EDERA



COD: GALEA

---

**MICRO LANA PLISSET**  
70% microfibra pc, 30% lana



COD: LAVANDA



COD: LILLA'



COD: 1895



COD: 1899

---

MICRO LANA PLISSET  
70% microfibra pc, 30% lana



COD: 1870



COD: 1871





COD: 1892



COD: 1898

---

**MICRO LANA PLISSET**  
70% microfibra pc, 30% lana



COD: 1820



COD: 1811



COD: 1831



COD: 1813

---

MICRO LANA PLISSET  
70% microfibra pc, 30% lana



COD: 1891



COD: 1801



COD: 1805



COD: 1807

---

**MICRO LANA PLISSET**  
70% microfibra pc, 30% lana



COD: BILANCIA



COD: SCORPIONE

**MICRO LANA PLISSET LUREX**

56% microfibra pc, 24% lana  
12% poliestere, 8% poliammide



COD: SAGITTARIO



COD: CAPRICORNO

---

**MICRO LANA PLISSET LUREX**

56% microfibra pc, 24% lana  
12% poliestere, 8% poliammide



COD: LINDA ML



COD: EVA





COD: FIORE



COD: ROSA

WARM VISCOSA

83% viscosa, 14% acrilico  
5% elasthan



COD: CAMELIA



COD: CALLA



COD: VIOLA



COD: MARGHERITA

---

WARM VISCOSA

83% viscosa, 14% acrilico  
5% elasthan



COD: SOUL



COD: FUSION



COD: POP



COD: ROCK

---

LANA SETA PLISSET

85% lana, 15% seta



COD: BLUES



COD: JAZZ



COD: DANCE

---

LANA SETA PLISSET

85% lana, 15% seta



COD: SWING



COD: SAMBA





COD: BOLIVIA



COD: MEXICO

---

VISCOSA E PIZZO  
95% viscosa, 5% elasthan



COD: 673



COD: 672



COD: 671



COD: 670

---

MODAL E PIZZO  
92% modal, 8% elasthan



COD: COLOMBIA

**TULLE E PIZZO**

87% poliammide, 13% elasthan



COD: 608

**MODAL E TULLE**

92% modal, 8% elasthan



COD: 607



COD: 606

---

MODAL E TULLE  
92% modal, 8% elasthan

---

GUIDA AI COLORI

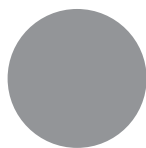
---



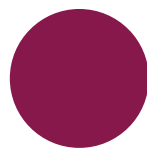
OTTANIO



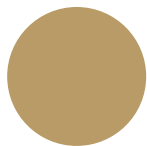
NERO



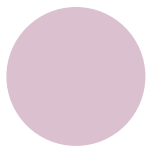
GRIGIO



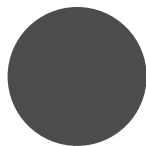
SANGRIA



AVANA



CIPRIA



ANTRACITE



NATURALE

*Lesia*

intimo

---

GUIDA AI COLORI

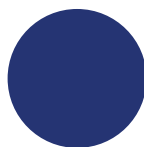
---



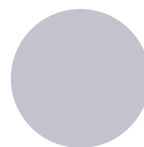
VINACCIA



ACQUA



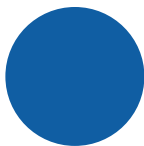
BLU



LILLA



GHIACCIO



JEANS



CORALLO

*dee*

made in italy



Confezioni Manola s.a.s.  
Via Polonia, 6  
35028 Piove di Sacco (PD)  
Tel: 049.73.84.003  
[manola.confezioni@gmail.com](mailto:manola.confezioni@gmail.com)  
[www.confezionimanola.com](http://www.confezionimanola.com)